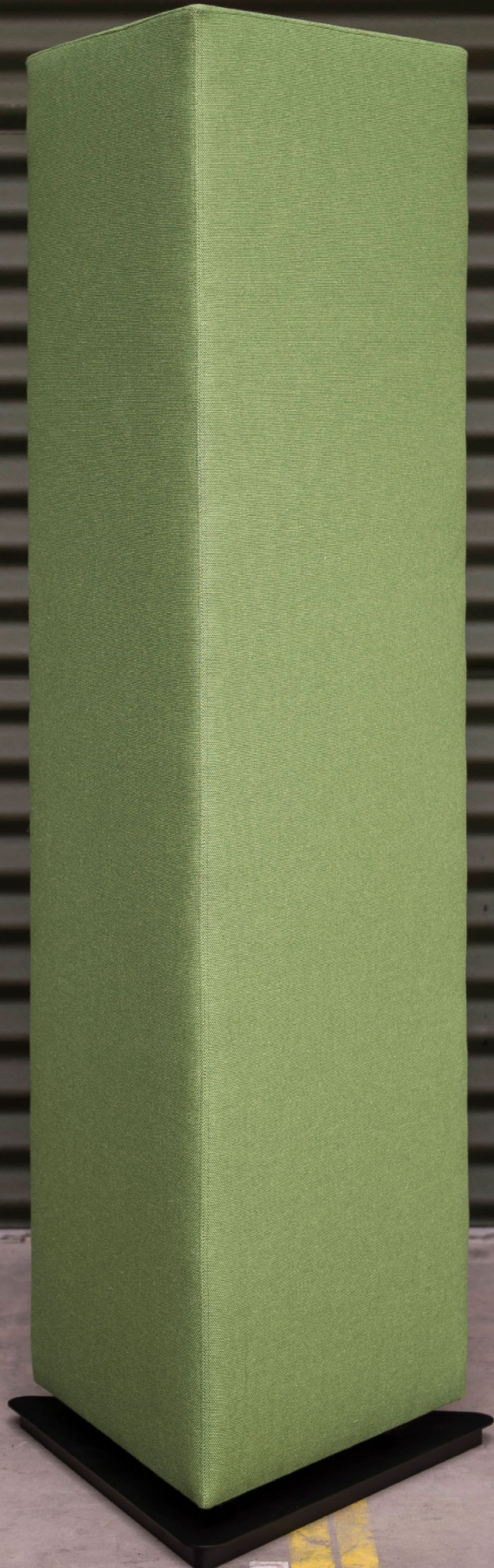

BuzziTotem

Product Specification Sheet

This document contains technical information about the BuzziTotem



www.buzzi.space



Free standing acoustic pillar

BuzziTotem is a completely new family being introduced for specific acoustical performance. The range consist of 3 models – Wedge, Cylinder, Beam and each in 3 sizes. For stability reasons and functional purpose the models are fixed on a black metal baseplate. Thanks to it's small footprint it is easy to add on in existing fitted rooms with sound issues. BuzziTotem is highly performant for diffusion and absorbing sounds in offices, residential homes and hospitality areas. Thanks to the vast range of fabrics offered BuzziTotem can become a true design feature.

Design by BuzziSpace Studio

General

- 📍 BuzziTotem Wedge | Beam | Cylinder
- 🌲 Filling: Foam SG28.3 + Plywood, MDF, Pinewood
Baseplate: powder coated metal
- ... Fabrics: Fabric, Rough, Trevira CS+ | CS, Revive 1, Revive 2, Terra, Clara 2, Remix 2, Velvet, Hero, Tonus 4, Tonus Meadow, Memory 2, Matrix

Acoustics



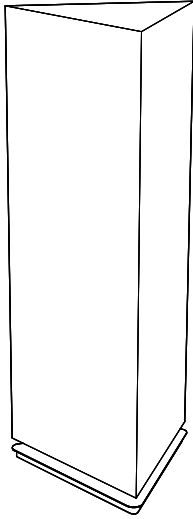
Absorption

Content

Configurations	3
Fabrics	5
Dimensions	9
Acoustics	12

Configurations

BuzziTotem Wedge S | Wedge M | Wedge L



Filling: Foam SG28.3 + Plywood, MDF, Pinewood
Baseplate: powder coated metal

Wedge S: W 62 cm, H 120 cm
W 24.41", H 47.24"



Wedge M: W 62 cm, H 155 cm
W 24.41", H 61.02"

Wedge L: W 62 cm, H 190 cm
W 24.41", H 74.80"

Wedge S: 10,5 kg
23.15 lbs



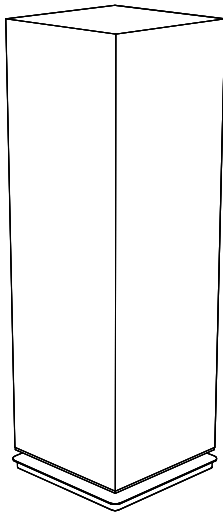
Wedge M: 13 kg
28.66 lbs

Wedge L: 15,5 kg
34.17 lbs



Fabrics: Fabric, Rough, Trevira CS+ | CS, Revive 1, Revive 2,
Terra, Clara 2, Remix 2, Velvet, Hero, Tonus 4, Tonus Meadow,
Memory 2, Matrix
Color baseplate: Black (RAL 9005) or White (RAL 9010)

BuzziTotem Beam S | Beam M | Beam L



Filling: Foam SG28.3 + Plywood, MDF, Pinewood
Floorplate: metal, powder coated

Beam S: W 52 cm, H 120 cm, D 52 cm
W 20.47", H 47.24", D 20.47"



Beam M: W 52 cm, H 155 cm, D 52 cm
W 20.47", H 61.02", D 20.47"

Beam L: W 52 cm, H 190 cm, D 52 cm
W 20.47", H 74.80", D 20.47"

Beam S: 15 kg
33.06 lbs



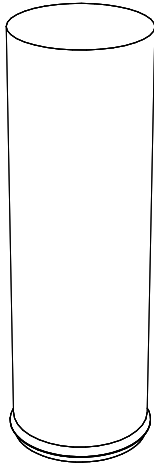
Beam M: 18,5 kg
40.78 lbs

Beam L: 22 kg
48.50 lbs



Fabrics: Fabric, Rough, Trevira CS+ | CS, Revive 1, Revive 2,
Terra, Clara 2, Remix 2, Velvet, Hero, Tonus 4, Tonus Meadow,
Memory 2, Matrix
Color baseplate: Black (RAL 9005) or White (RAL 9010)

BuzziTotem Cylinder S | Cylinder M | Cylinder L



🌲 Filling: Foam SG28.3 + Plywood, MDF, Pinewood
Baseplate: powder coated metal

Cylinder S: Ø 52 cm, H 120 cm
Ø 20.47", H 47.24"

✂ Cylinder M: Ø 52 cm, H 155 cm
Ø 20.47", H 61.02"

Cylinder L: Ø 52 cm, H 190 cm
Ø 20.47", H 74.80"

Cylinder S: 12 kg
26.46 lbs

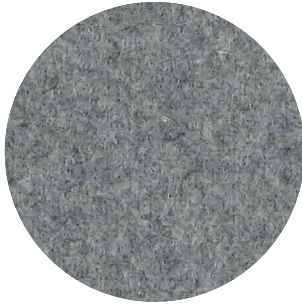
⚖ Cylinder M: 15 kg
33.06 lbs

Cylinder L: 18 kg
39.68 lbs

⋮ Fabrics: Fabric, Rough, Trevira CS+ | CS, Revive 1, Revive 2,
Terra, Clara 2, Remix 2, Velvet, Hero, Tonus 4, Tonus Meadow,
Memory 2, Matrix
Color baseplate: Black (RAL 9005) or White (RAL 9010)

Fabrics

Fabric



Category A

Composition 70% Recycled Wool, 25% Recycled Polyacryl,
5% Recycled Other Fabrics

Weight 405 g/m² | 11.94 oz/yd²

Abrasion resistance 40.000 Martindale, 50,000 Wyzenbeek

Flammability EU: EN 1021.1/2006 | BS EN 1021.1/2006 (cigarette).
EN 1021.2/2006 | BS EN 1021.2/2006 (match)
USA: CAL TB 117 | ASTM E84 CLASS A

Fastness to light EU: 4 | USA 4

Fastness to rubbing EU: Wet 3-4 | Dry 4-5

Fastness to crocking USA: Wet 5 | Dry 5



Rough



Category A

Composition 100% Polyacryl

Weight 456 g/m² | 13.45 oz/yd²

Abrasion resistance 40.000 Martindale

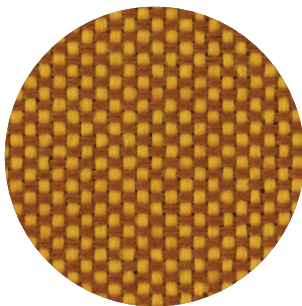
Flammability EU: EN 1021.1/2006 | BS EN 1021.1/2006 (cigarette)
USA: CAL TB TB 117

Fastness to light EU: 5

Fastness to rubbing EU: Wet: 3 | Dry: 3



Trevira CS+ | CS



Category A

Weight 420 g/m² | 12.39 oz/yd²

Composition 100% Polyester, Trevira CS

Abrasion resistance 100.000 Martindale, 90,000 Wyzenbeek

Flammability BS 5852 part II: CRIB 5 | BS 7176 Medium Hazard
USA: CAL TB 117 | M1 | B1 | EN 1021/1-2 | C1 |
IMO Res. A652 (16)

Fastness to light EU: 6 | USA 5

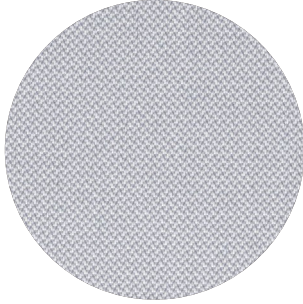
Fastness to rubbing EU: Wet 4-5 | Dry 4-5

Fastness to crocking USA: Wet 5 | Dry 5



Revive 1

kvadrat



Category A

Composition 100% recycled polyester FR

Weight 430 g/lin.m

Abrasion resistance 60.000 Martindale rubs, EN ISO 12947

Flammability EN 1021-1/2 | DIN 4102 B1 | Önorm B1/Q1
UNI 9175 1IM | US Cal. Tech. Bull. 117
IMO A.652 (16)

Fastness to light Note 5-7, ISO 105-B02

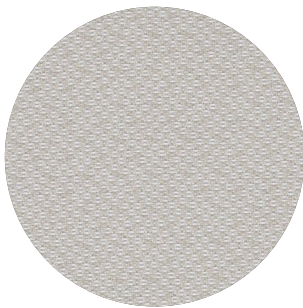
Fastness to rubbing (ISO) dry 5, wet 4-5

Pilling Note 4-5, EN ISO 12945



Revive 2

kvadrat



Category A

Composition 100% recycled polyester FR

Weight 420 g/lin.m

Abrasion resistance 45.000 Martindale rubs, EN ISO 12947

Flammability EN 1021-1/2 | DIN 4102 B1 | Önorm B1/Q1
UNI 9175 1IM | US Cal. Tech. Bull. 117
IMO A.652 (16)

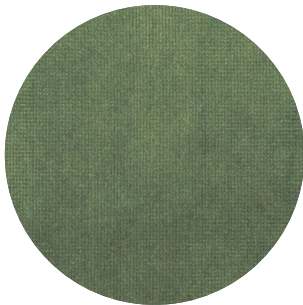
Fastness to light Note 5-7, ISO 105-B02

Fastness to rubbing (ISO) dry 5, wet 4-5

Pilling Note 4-5, EN ISO 12945



Velvet



Category B

Composition 100% PES

Weight 375 g/m² | 11.06 oz/yd²

Abrasion resistance > 100.000 Martindale

Fastness to light EU: 4-5

Fastness to rubbing EU: Wet 4 | Dry 4-5

Pilling EU: 4-5

Terra



Category B

Composition 100% Pure New Wool

Weight 370 g/m² | 10.91 oz/yd²

Abrasion resistance 40.000 Martindale, 25,000 Wyzenbeek

Flammability EU: BS5852 CRIB 5 | BS5867 PART 2 : 2008 : TYPE B
EN: 1021.2/2006 | USA: CAL TB 117

Fastness to light EU 5 | USA 5

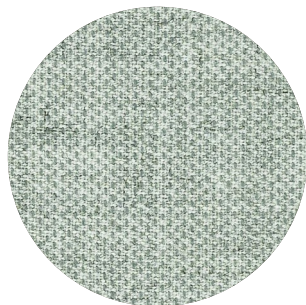
Fastness to rubbing EU: Wet 4 | Dry 4

Fastness to crocking USA: Wet 4 | Dry 4



Clara 2

kvadrat



Category B

Composition 92% new wool, 8% nylon

Weight 400 g/lin.m

Abrasion resistance 80.000 Martindale rubs, EN ISO 12947

Flammability EN 1021-1/2 | BS 5852, ignition source 2-3 | DIN 4102 B2
NF D 60 013 | UNI 9175 11M | US Cal. Tech. Bull. 117, Sec. E
NFPA 260 | IMO A.652(16)

Fastness to light Note 5-7, ISO 105-B02

Fastness to rubbing (ISO) dry 4-5, wet 4

Pilling Note 4, EN ISO 12945



Remix 2

kvadrat



Category B

Composition 90% new wool, 10% nylon

Weight 415 g/lin.m

Abrasion resistance 100.000 Martindale rubs, EN ISO 12947

Flammability EN 1021-1/2 | BS 5852 part 1
Önorm B1/Q1 | NF D 60 013 | UNI 9175, 11M
AS/NZS 1530.3 | Cal. Tech. Bull. 117-2013
NFPA 260 | IMO FTP Code 2010:Part 8

Fastness to light Note 5-7, ISO 105-B02

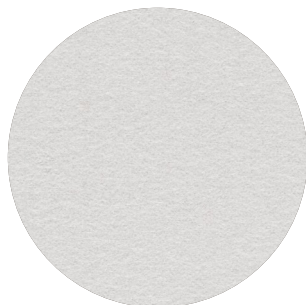
Fastness to rubbing (ISO) dry 4-5, wet 4

Pilling Note 4, EN ISO 12945



Hero

kvadrat



Category C

Composition 96% new wool, 4% nylon

Weight 580 g/lin.m

Abrasion resistance 45.000 Martindale rubs, EN ISO 12947

Flammability EN 1021-1/2 | DIN 4102 B2 | NF D 60 013
UNI 9175 11M | US Cal. Bull. 117-2013 | NFPA 260
IMO A.652 (16)

Fastness to light Note 5-6, ISO 105-B02

Fastness to rubbing (ISO) dry 4-5, wet 4-5

Pilling Note 3-4, EN ISO 12945



Tonus 4

kvadrat



Category D

Composition 90% new wool, 10% Helanca

Weight 665 g/lin.m

Abrasion resistance 100.000 Martindale rubs, EN ISO 12947

Flammability EN 1021-1/2 | BS 5852 part 1 | DIN 4102 B2
Önorm B1/Q1 | NF D 60 013 | UNI 9175 11M
US Cal. Bull. 117-2013 | NFPA 260 | IMO A.652 (16)

Fastness to light Note 5-7, ISO 105-B02

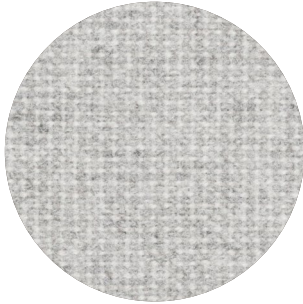
Fastness to rubbing (ISO) dry 3-5, wet 3-5

Pilling Note 3, EN ISO 12945



Tonus Meadow

kvadrat



Category D

Composition 90% new wool, 10% Helanca

Weight 665 g/lin.m

Abrasion resistance 100.000 Martindale rubs, EN ISO 12947

Flammability EN 1021-1/2 | BS 5852 part 1 | DIN 4102 B2

Önorm B1/Q1 | NF D 60 013 | UNI 9175 11M

US Cal. Bull. 117-2013 | NFPA 260 | IMO A.652 (16)

Fastness to light Note 5-7, ISO 105-B02

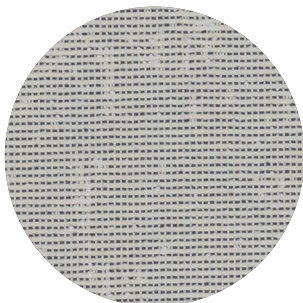
Fastness to rubbing (ISO) dry 4-5, wet 4

Pilling Note 3, EN ISO 12945



Memory 2

kvadrat



Category E

Composition 100% Trevira CS

Weight 700 g/lin.m

Abrasion resistance

35.000 rubs acc. to the Martindale method, EN ISO 12947

Flammability EN 1021-1/2 | DIN 4102 B1 | Önorm B1/Q1

NF D 60 013 | NF P 92 507 M1 | UNI 9175 11M

UNI 9177 classe 1 | US Cal. Tech. Bull. 117

IMO A.652 (16)

Fastness to light Note 5-8, ISO 105-B02

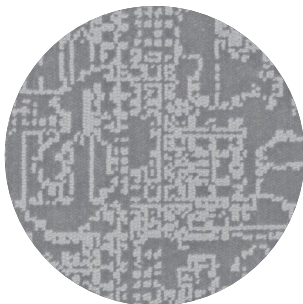
Fastness to rubbing (ISO) dry 4-5, wet 4-5

Pilling Note 4, EN ISO 12945



Matrix

kvadrat



Category F

Composition 100% Trevira CS

Weight 760 g/lin.m

Abrasion resistance

App. 60.000 rubs acc. to the Martindale method, EN ISO 12947

Flammability EN 1021-1/2 | BS 5852 crib 5 | BS 5867 part 2 type B

DIN 4102 B1 | Önorm B1/Q1 | NF D 60 013

UNI 9175 11M | US Cal. Tech. Bull. 117 | NFPA 701

IMO A.652 (16)

Fastness to light Note 5-7, ISO 105-B02

Fastness to rubbing (ISO) dry 4-5, wet 4-5

Pilling Note 4, EN ISO 12945

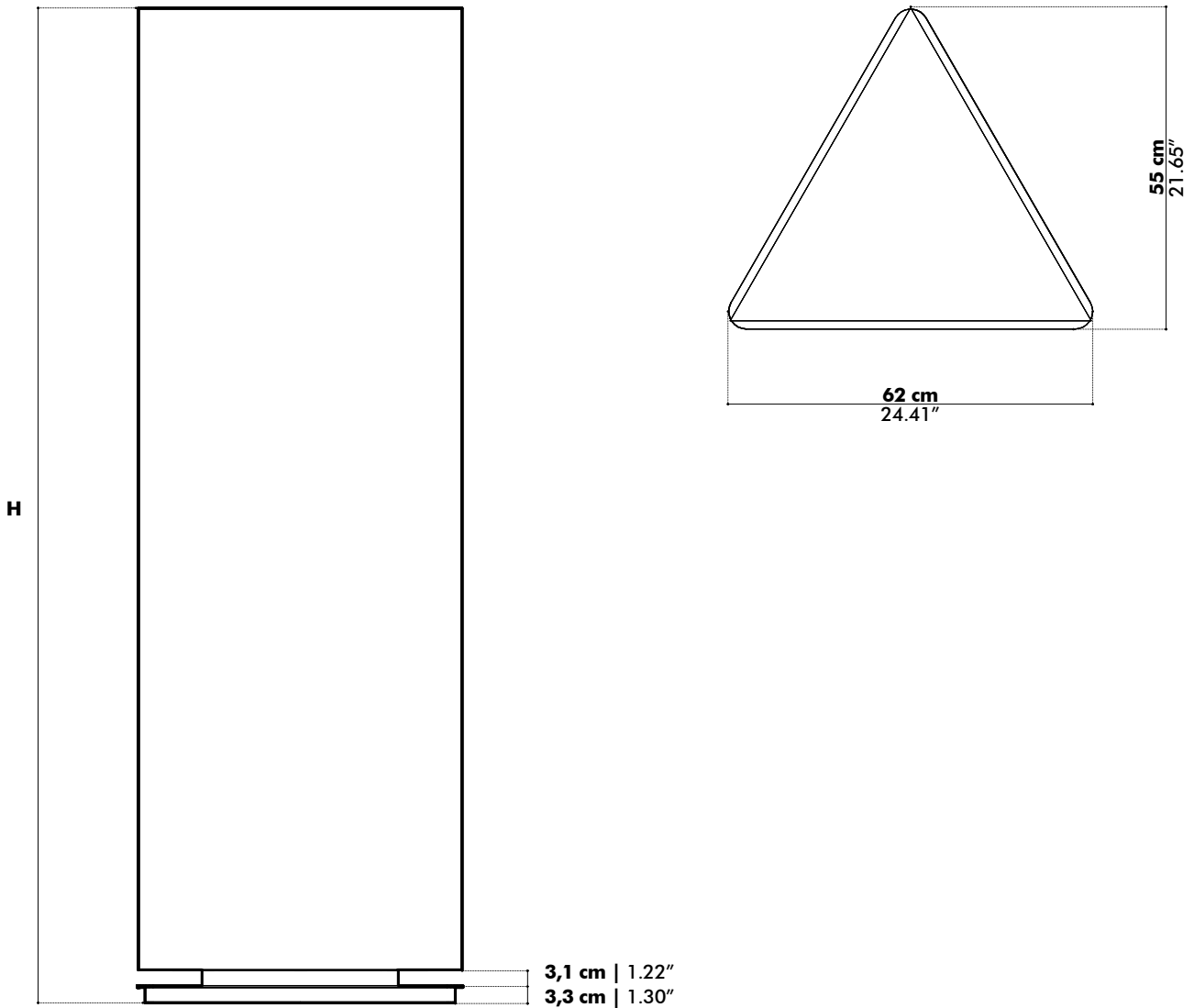


Dimensions

BuzziTotem Wedge

Side

Top

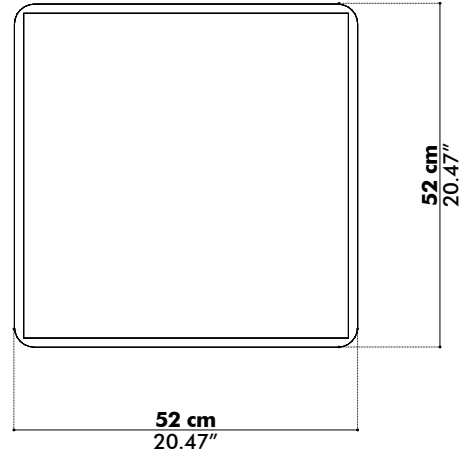
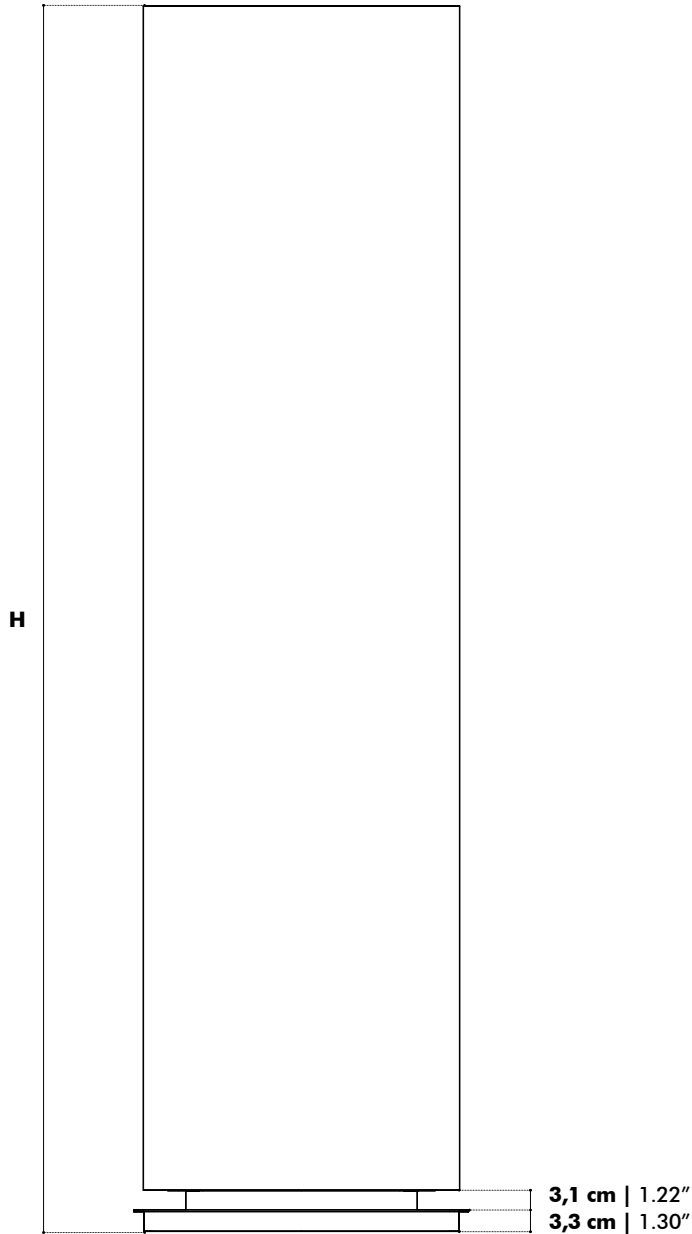


	Wedge S	Wedge M	Wedge L
H	120 cm	155 cm	190 cm
	47.24"	61.02"	74.80"

BuzziTotem Beam

Side

Top

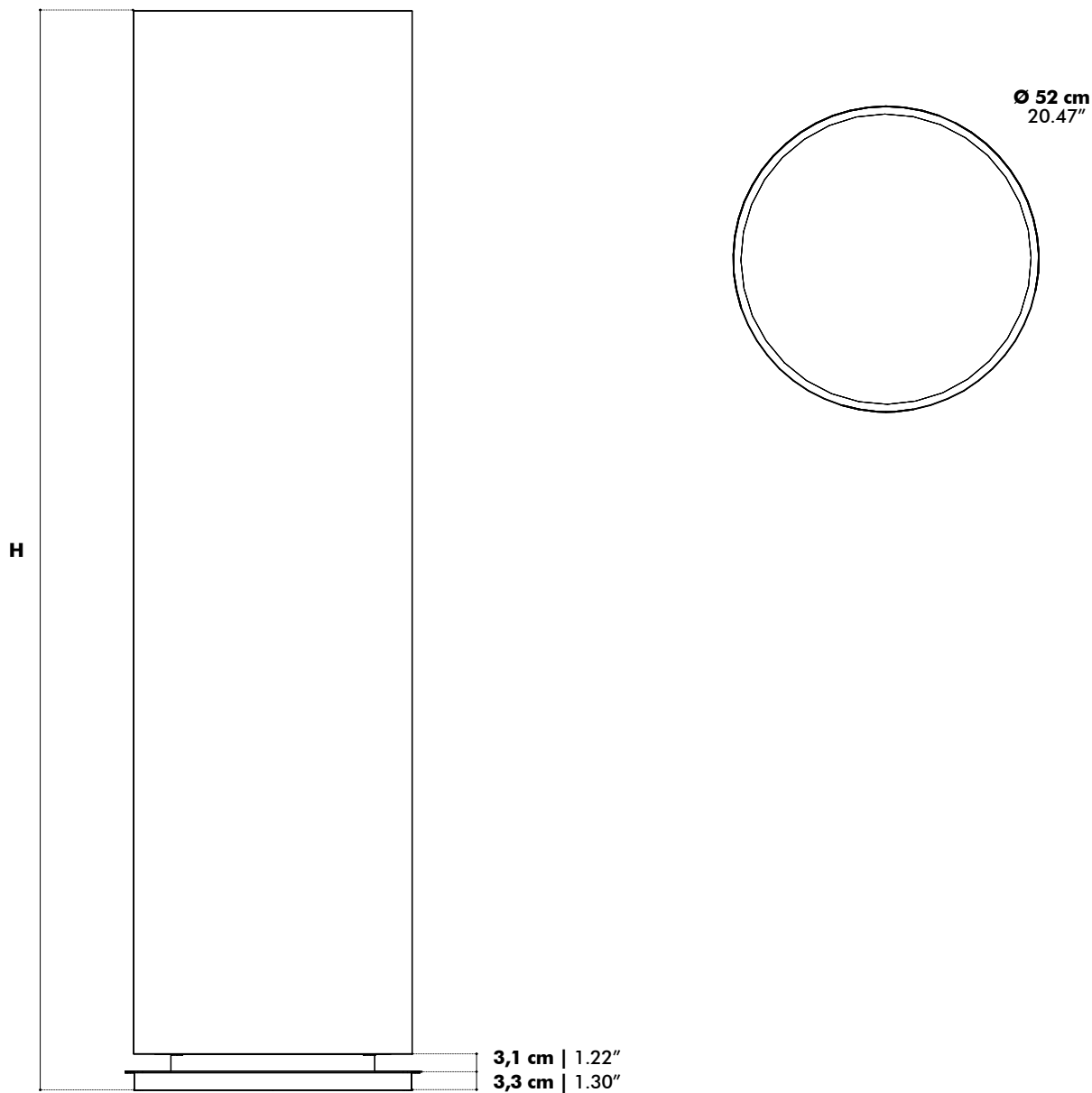


	Beam S	Beam M	Beam L
H	120 cm	155 cm	190 cm
	47.24"	61.02"	74.80"

BuzziTotem Cylinder

Side

Top

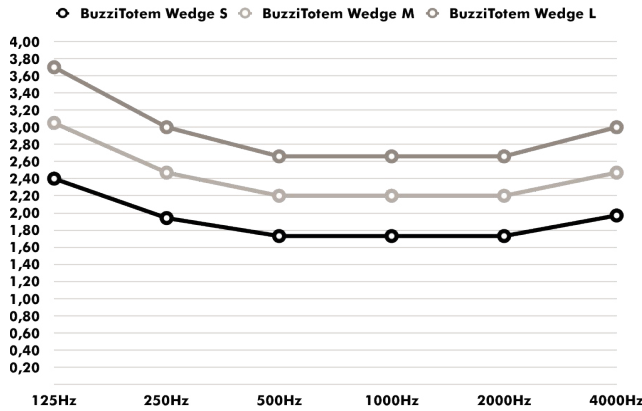


	Cylinder S	Cylinder M	Cylinder L
H	120 cm	155 cm	190 cm
	47.24"	61.02"	74.80"

Acoustics

BuzziTotem Wedge

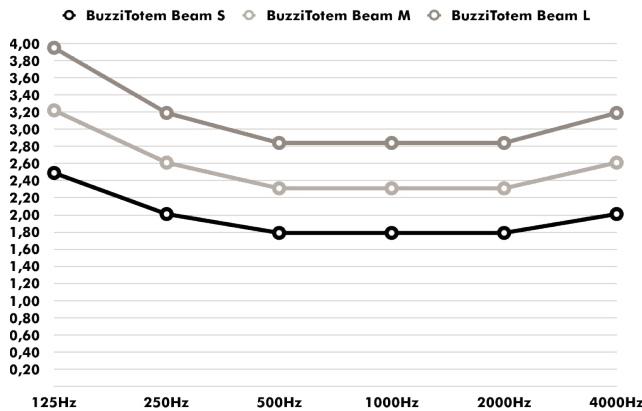
Equivalent sound absorption area in m² per object



Hz	Wedge S Aeq/m ²	Wedge M Aeq/m ²	Wedge L Aeq/m ²
125	2.40	3.05	3.70
250	1.94	2.47	3.00
500	1.73	2.20	2.66
1000	1.73	2.20	2.66
2000	1.73	2.20	2.66
4000	1.97	2.47	3.00

BuzziTotem Beam

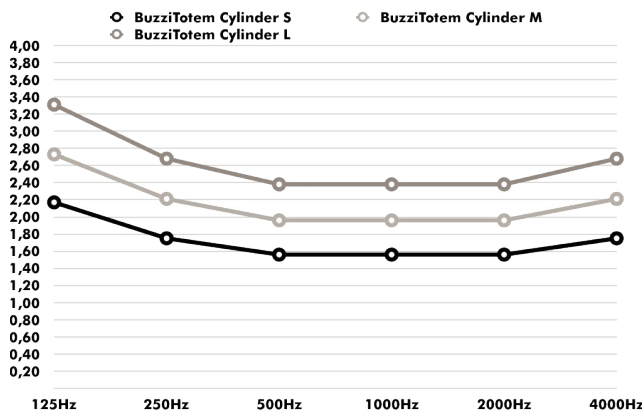
Equivalent sound absorption area in m² per object



Hz	Beam S Aeq/m ²	Beam M Aeq/m ²	Beam L Aeq/m ²
125	2.49	3.22	3.95
250	2.01	2.61	3.19
500	1.79	2.31	2.84
1000	1.79	2.31	2.84
2000	1.79	2.31	2.84
4000	2.01	2.61	3.19

BuzziTotem Cylinder

Equivalent sound absorption area in m² per object



Hz	Cylinder S Aeq/m ²	Cylinder M Aeq/m ²	Cylinder L Aeq/m ²
125	2.17	2.73	3.31
250	1.75	2.21	2.68
500	1.56	1.96	2.38
1000	1.56	1.96	2.38
2000	1.56	1.96	2.38
4000	1.75	2.21	2.68